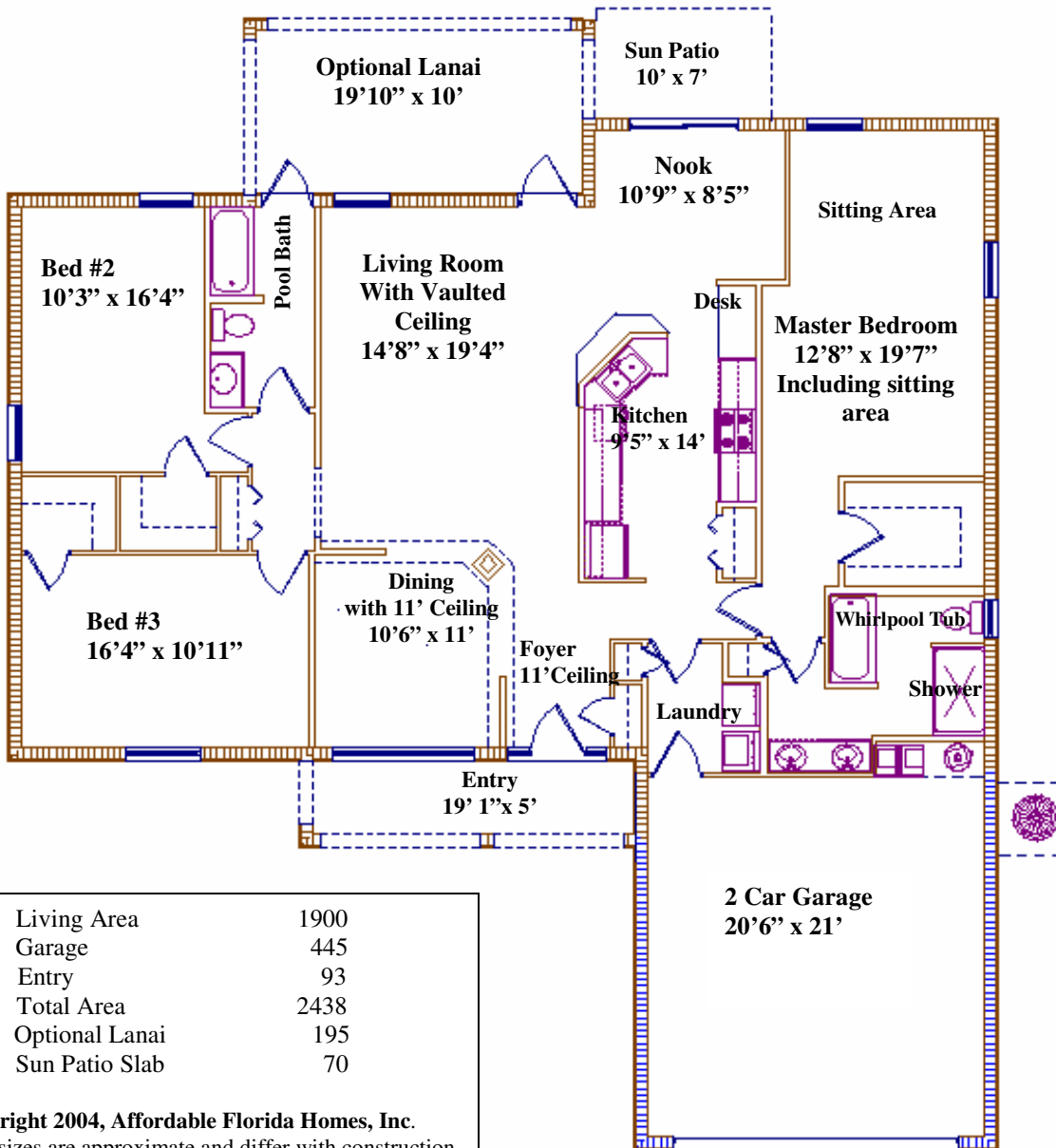
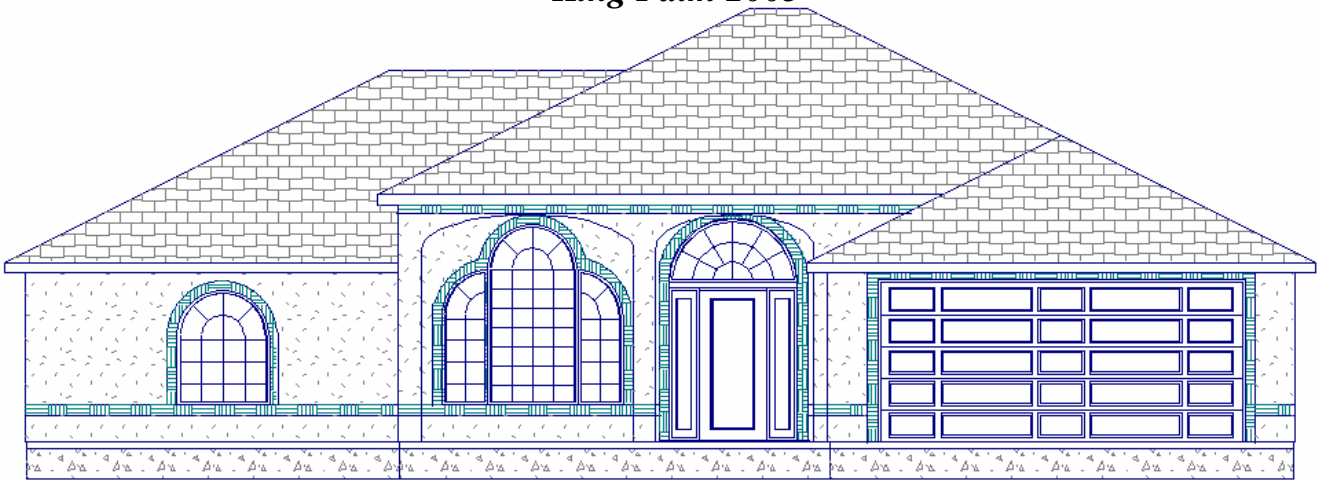


King Palm 2005



| | |
|----------------|------|
| Living Area | 1900 |
| Garage | 445 |
| Entry | 93 |
| Total Area | 2438 |
| Optional Lanai | 195 |
| Sun Patio Slab | 70 |

Copyright 2004, Affordable Florida Homes, Inc.
 All room sizes are approximate and differ with construction techniques and could be inside or outside measurement, elevation may vary slightly. House may need to be flipped to the side of power location

Affordable Florida Homes, Inc.
 P.O. Box 898, Bunnell FL 32110
 Phone: (386) 586-1044 Fax: 1 (866) 721-6888
www.affordablefloridahomes.com